



**ATEX 0102 CE**

II 2G Ex d II C T6 / T5 X (gas-protected zone 1 and 2)

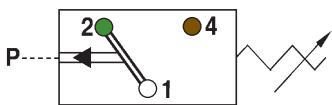
- Aluminium body
- With changeover switch
- Max. voltage 250 V
- Overpressure safe up to 200 / 600 bar<sup>1)</sup>

**With female thread**



**Contact assignment:**

- 1 = white
- 2 = green
- 4 = brown



■ Our pressure switches are also available with factory pre-set switching points.

■ For further technical data see page 46.

p <sub>max.</sub> in bar	Adjustment range in bar	Tolerance at room temperature	Thread	Order number:
--------------------------	-------------------------	-------------------------------	--------	---------------

**0165 Diaphragm pressure switches**

200 <sup>1)</sup>	1 – 6	± 0.5	G 1/4 female	0165	448	14	X	001
	5 – 50	± 3.0		0165	449	14	X	001

**0165 Piston pressure switches**

600 <sup>1)</sup>	20 – 100	± 3.0 – 5.0	G 1/4 female	0165	450	14	X	001
	100 – 400	± 5.0 – 9.0		0165	451	14 <td>X</td> <td>001</td>	X	001

**Diaphragm / seal material – areas of application**

<b>NBR</b>	Hydraulic / machine oil, heating oil, air, nitrogen etc.	<b>1</b>
<b>EPDM</b>	Brake fluid, ozone, acetylene, hydrogen etc.	<b>2</b>
<b>FKM</b>	Hydraulic fluids (HFA, HFB, HFD), petrol/gasoline etc.	<b>3</b>

See page 46 for temperature ranges of diaphragm / seal materials

<b>Order number:</b>	<b>0165 - XXX 14 - X - 001</b>
----------------------	--------------------------------

Piston pressure switches are only to a limited extent suitable for use with gases. See explanation on page 9.

<sup>1)</sup> Static pressure, dynamic pressures should be 30 to 50% lower. These values refer to the hydraulic or pneumatic part of the pressure switch.